

## Centralized Control for Mobile Deployments

NetMotion Mobility® gives enterprises a central control point for managing mission-critical mobile deployments. It keeps mobile workers connected as they move in and out of wireless coverage areas and roam between networks, provides the ability to set policies to manage devices, applications access and bandwidth, and gives organizations the visibility they need to maximize their mobile investments.



## Overcome Wireless Challenges

NetMotion Mobility helps organizations save time and money overcoming the major challenges of wireless data deployments: ensuring secure data transfers, creating persistent connections to keep mobile workers productive, and providing the capabilities to manage and control wireless deployments.

### Mobility Features

Security	
<b>Enhanced Protection</b>	Mobility supplies the industry's strongest security with FIPS 140-2 validated, NSA Suite B and Common Criteria encryption. IT Administrators can verify that every device is up-to-date with software and patches, and that security measures are enabled.
<b>Two-Factor Authentication</b>	Mobility supports two-factor authentication, as well as most standards-based PKI authentication infrastructures by leveraging RADIUS and NTLM.
<b>Enforcement</b>	Flexible policies control device and application behavior, restrict application access, and keep bandwidth-intensive processes off slower networks where they can slow down performance.
Productivity	
<b>Ease of Use</b>	Mobile workers never need to worry about the technology. Mobility provides an always-on VPN connection that automatically connects users at start-up and resume.
<b>Improved Performance</b>	By reducing protocol overhead and transmitting less data, Mobility improves application responsiveness and productivity over wireless networks, delivering up to 3 times the effective throughput of our major competitors and 3.5 times the effective throughput over the same networks without Mobility installed.
<b>Always Reliable</b>	Mobility keeps applications alive and stable through any disruption. In coverage gaps, or when users suspend and resume their device, applications pause, then resume when a connection returns. Data transfers pick up where they left off, even days after a device is resumed.
Management	
<b>Central Control</b>	Mobility's console allows all aspects of the system to be centrally configured, managed, and monitored — from overall metrics like application usage, to the ability to block and prioritize applications, down to the details of a single mobile worker's battery power on their device.
<b>Streamlined Compatibility</b>	Mobility allows any application to run reliably over wireless networks. There's no need for modifications. Mobility is compatible with Windows™ devices, and any IP network.
<b>Easy to Scale</b>	Mobility easily handles the transition from small to large deployments. It can scale up to 1,500 concurrently connected devices when servers are pooled to provide additional capacity and create a highly scalable system with no single point of failure.

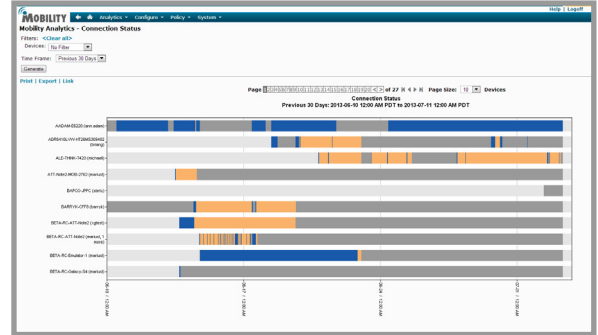
# Powerful Management and Visibility

NetMotion Mobility comes equipped with three powerful management modules that provide IT Administrators the capability to run reports, set bandwidth and access policies, and enforce security procedures.

## Policy Management

Policy Management allows IT Administrators to create and enforce security policies based on business needs. Policy Management can control access by user, device, network or application, and create policies to:

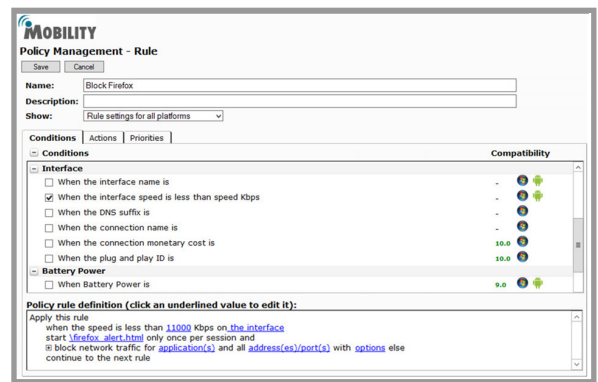
- Control Applications and Access
- Manage Traffic with Quality of Service (QoS)
- Optimize network connections to support real-time applications over networks with up to 50% packet loss
- Confine Bandwidth-Intensive Applications to High-Capacity Connections



## Network Access Control (NAC)

Network Access Control ensures that workers' devices have adequate security measures in place before granting access to applications and data. With NAC, organizations have greater control over access to wireless networks and can:

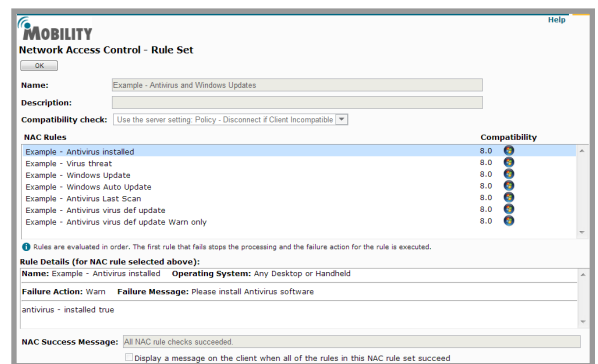
- Deploy Quickly
- Ensure Security Compliance
- Automate Updates and Compliance Checks



## Analytics

Mobility delivers detailed business insight. The Analytics module provides statistics on performance and usage, and also gathers intelligence on networks and applications used by workers.

- Know how Resources are Used
- Gain a More Efficient Help Desk
- Get Intelligence to Plan Proactively



## Extensive Platform Support

Mobility has extensive platform support, working on the majority of widely-used mobile operating systems. Mobility supports Android devices running on Android 4.0x to 4.3x, and Windows Pro Tablets as well as devices running Windows XP, 7, and 8. Mobility also offers connectivity for iOS, Mac, and Linux devices.



Learn more at: [www.NetMotionWireless.com](http://www.NetMotionWireless.com)